



Please contact your Rexnord Representative with any questions:

Rexnord FlatTop Europe
Einsteinstraat 1, 2691 GV
's-Gravenzande
The Netherlands
Phone: +31 174 445 111
After Hours Emergency
Phone: +31 174 445 112
(including countries not listed)

Rexnord FlatTop Italy
Phone: +39 0522 639333

Rexnord FlatTop Germany
Phone: 0800 588 8083

Rexnord FlatTop France
Phone: 0805 540 444

Rexnord FlatTop India
Phone: +91 98813 99026

Rexnord FlatTop China
Phone: +86 21 66188307

**Rexnord FlatTop
North America**
1272 Dakota Drive
Grafton, WI, 53024 USA
Phone: 1-262-376-4700

www.rexnord.com
www.rexnordflattop.com

Rexnord 3180 Series MatTop Chains Automotive Solution Breakthrough

The Rexnord 3180 MatTop® Series Chain offers a maintenance free chain system widely used in automotive and heavy-duty industrial applications. The 3180 Series Chain offers high strength and stiffness. These attributes provide continuously smooth operation under heavily loaded conditions.

Automotive

Automotive plants benefit from the 3180 Series Chain thanks to trouble-free operation, increased safety and a lower TCO (Total-Cost-of-Ownership).

SKID Handling

The 3180 Series Chain is designed for 3.1-inch (81mm) skid conveyors. The 3180 SolidTop surface allows the skids to be aligned mechanically before transferring to the next conveyor. The RubberTop® feature ensures proper skid position in frequent start-stop operations. An example would be; buffer systems between the paint shop and the assembly department.

Easy Technology Conversion

The 3180 Series Chain expands the possibilities to easily and economically convert from your existing technology. Reinforced rubber belt applications can be converted to a reliable MatTop technology handling solution, using the existing conveyor structure and applying new guides and drive sprockets.

Operation

Rexnord 3180 MatTop Series Chains offer a reliable and smooth operation in combination with Rexnord's MatTop chain advantages:

- Insensitive to automotive liquids
- Positive drive sprocket eliminates slippage and prevents the skid from twisting during conveying
- Energy savings due to full plastic chain design which offers reduced weight and low-friction
- High stiffness through narrow hinge design and large pin diameter
- No tensioning of the chain is required
- Easy installation and maintenance
- Chain damage can be repaired by replacing a single link at a time



3185 Series SolidTop Chain



3185 Series RubberTop Chain

Energy Saving

The proven chain design provides high-stiffness, minimizing the need for stainless steel pins. The result is less chain weight and a reduction in energy consumption.

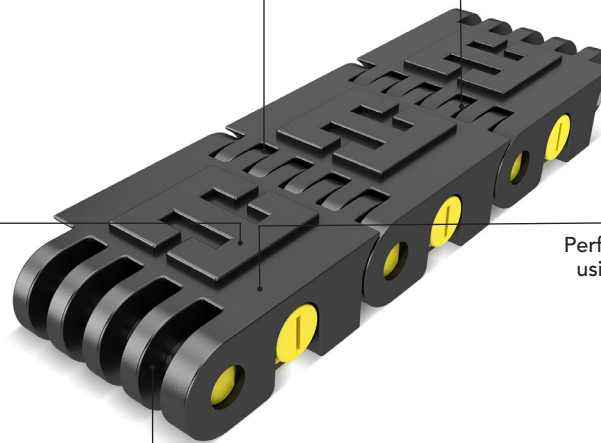
Reliable Handling

Optional high-friction RubberTop surface ensures positive SKID position at all times during start-stop or indexing operations.

Smooth Operation

The narrow hinge design and large pin diameter result in high chain stiffness creating smooth chain operation under all load conditions.

3180 Series RubberTop



Drive

The 3180 Series Chain is driven by Rexnord's proven sprocket design offering a standard double row tooth (H-style) configuration. In highly loaded applications, the chain can be driven by an optional triple row tooth sprocket.

Performance

Performance can be tailored to applications using either Rexnord's smooth SolidTop or high-friction RubberTop surface.

Material Selection

The 3180 Series Chain is available in wear resistant polyacetal (BSM) or high capacity antistatic polyacetal (HCAS). HCAS is combining strength with superior anti-static properties (surface resistivity $10^{11} - 10^{13}$ Ohm/sq). Both materials are resistant to fluids commonly used in the automotive industry.

Chain Type	Code Number	Working Load (max)	Weight	Back-flex Radius (min)
		lbs / N	lbs/ft/kg/m	in / mm
BSM3185-K3,2 MTW	I3185BSMK3,2	2102 / 9350	5.67 / 2.57	3.00 / 76.2
HCAS3185-K3,2 MTW	I3185HCASK3,2	1790 / 7950	5.67 / 2.57	3.00 / 76.2
BSM3185RT-K3,2 MTW	819.95.25	2102 / 9350	5.78 / 2.62	3.00 / 76.2

Sprocket Type	Code Number	Pitch Circle Diameter	Bore Size	Hub Width
		in / mm	in / mm	in / mm
KU3180 T08 S60	890.65.59	7.839 / 199	2.36 x 2.36 / 60 x 60	1.65 / 42
KU3180 T09 S60	890.66.59	8.771 / 223	2.36 x 2.36 / 60 x 60	1.65 / 42
KU3180 T10 S60	890.67.59	9.708 / 246	2.36 x 2.36 / 60 x 60	1.65 / 42
KU3180 T11 S60	890.68.59	10.648 / 270	2.36 x 2.36 / 60 x 60	1.65 / 42

